

# Cellu-Cushion® PB

Polymer Blend Foam

## Stiff and Durable Blended Cushioning Foam



---

### The Difference Is In the Blend...

---

Cellu-Cushion® PB foam is an extruded blend of polymers that combine to provide a cushioning material that is *stiffer* and *smoother* than standard foam materials.

Providing all the superior characteristics of blended resins, Cellu-Cushion® PB foam creates a unique, high performance material that is:

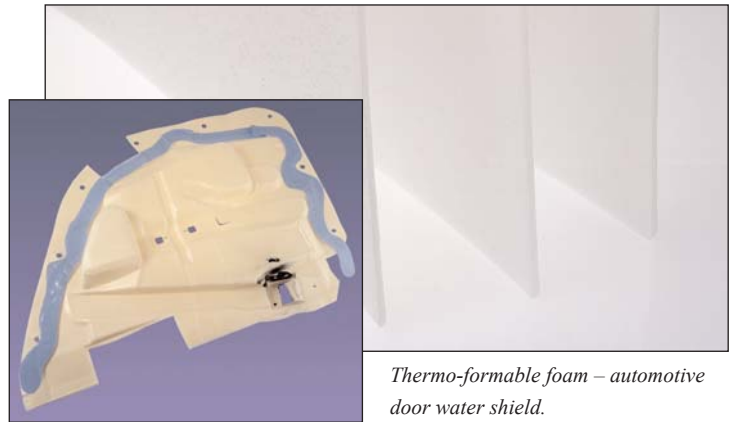
- Resilient
- Durable
- Flexible
- Thermo-formable
- Impervious to most chemicals
- Performs consistently over a wide range of temperatures
- Recyclable
- Easy to fabricate



# Cellu-Cushion® PB Foam Benefits

## Cellu-Cushion® PB Polymer Blend Foam Provides:

- Stiffness, cushioning, and the natural color makes for an excellent shelf liner for displaying delicate items.
- Lamination to standard Cellu-Cushion® foam which creates a stiff yet soft body board skin.
- Blended resin materials that allow excellent lamination to both polyethylene and polypropylene materials.
- Thermo-formable properties which create a stiff, non-permeable water shield material.



Thermo-formable foam – automotive door water shield.

PHYSICAL PROPERTIES	TEST METHOD	PB 200 1/8"	PB 400 1/8"	PB 600 1/8"
Compressive Strength Vertical Direction (psi) (plied to 1 inch)	ASTM D3575-93 Suffix D @ 25%/50%	10 17	13 25	24 42
Compression Set (%)	ASTM D3575-93 Suffix B	15	12	10
Tensile Strength MD/CMD (psi)	ASTM D3575-93 Suffix T	89 47	146 121	220 172
Tear Resistance (lb./in.)	ASTM D3575-93 Suffix G	20	45	60
Density Range (lb./ft. <sup>3</sup> )	ASTM D3575-93	1.7–2.3	3.6–4.4	5.6–6.4
Water Absorption (lb./ft. <sup>2</sup> )	ASTM D3575-93 Suffix L	<0.2	<0.2	<0.2
Thermal Stability	ASTM D3575-93 Suffix S	<2%	<2%	<2%
Thermal Conductivity K-Value (BTU-in. hr. ft <sup>2</sup> °F)	ASTM C518-91	0.32–40	0.32–40	0.32–40
Thermal Resistance R-Value (hr. ft <sup>2</sup> °F/BTU)	ASTM C518-91	1.40–1.70	1.40–1.70	1.40–1.70

### Cellu-Cushion® PB Foam Applications:

- Shelf Liners
- Automotive Sound and Water Shield Inserts
- OEM Part Dividers
- Reusable Tote Liners/Dividers
- Reusable Packaging of Glass Shelves
- Lamination to Body Board Cores
- Lamination to Polyethylene or Polypropylene Materials
- Others

Item	Density	Size	Color	Sq. Ft.
PB-200	2 pcf	1/8" x 48" x 500'	Natural	2000
PB-400	4 pcf	1/8" x 48" x 300'	Natural	1200
PB-600	6 pcf	1/8" x 48" x 300'	Natural	1200

Other sizes, colors and densities may be available upon request.

Distributed By:



Sealed Air Limited  
Specialty Materials  
Telford Way, Kettering  
Northants  
NN16 8UN, UK  
specialtymaterials-emea@sealedair.com  
www.sealedair-emea.com

Corporate Office: Sealed Air Corporation  
Park 80 East, Saddle Brook, NJ 07663-5291  
www.sealedair.com  
© Reg. U.S. Pat. Off. © Sealed Air Corporation 2002. All rights reserved. Printed in the U.S.A.  
The "9 Dot Logo" and "Sealed Air" are trademarks of Sealed Air Corporation (US).

D-159 6/04

Our Products Protect Your Products®